



## ALUMINIUM SYSTEMS @ **HUECK** Trigon Unit L



### CONSTRUCTION

- Thermally insulating aluminium facade design as a unit construction for vertical, polygonal curtain walls
- Optimised profile geometry with regard to weight and statics values
- Glass thickness between 2 and 50 mm
- Different insert elements from the HUECK system possible

### TEST RESULTS

- $U_f \geq 0.93 \text{ W/m}^2\text{K}$
- Water tightness static:  
RE 1200 (BS-EN 12154 and CWCT section 6)
- Water tightness dynamic: 300 Pa / 900 Pa EN 13050
- Air permeability class AE 900 EN 12152
- Resistance to wind load: 2400 Pa / 3600 Pa EN 12179
- Impact resistance: I5/E5 (EN 14019)
- Burglar resistance: RC2 (EN 1627)
- Seismic resistance: in accordance with (AAMA 501.4:2000)
- Tests in accordance with CWCT, ASTM and AAMA

### GASKETS

- Internal sealing profiles available as vulcanised frames or as metre-length material
- Weather-independent, can be inserted on site without sealing material

### ELEVATION WIDTH

- Frame and mullion profiles with an elevation width of 33 mm or 50 mm and 75 mm

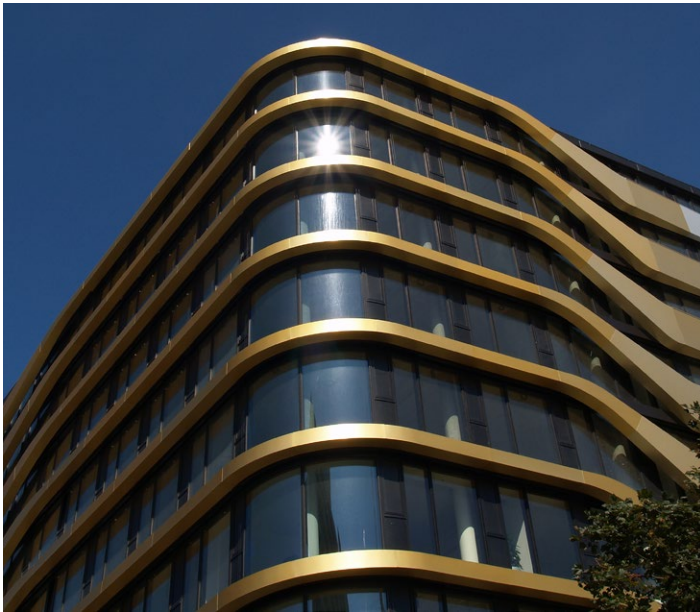
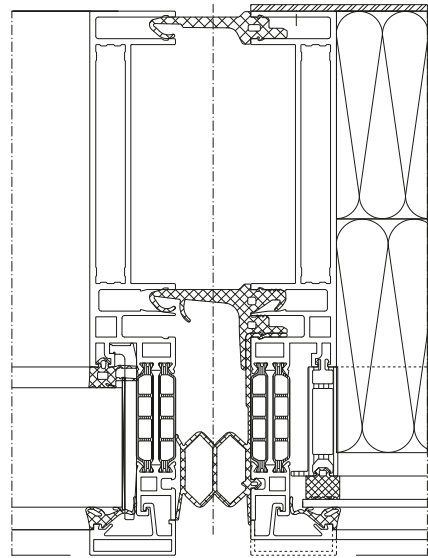
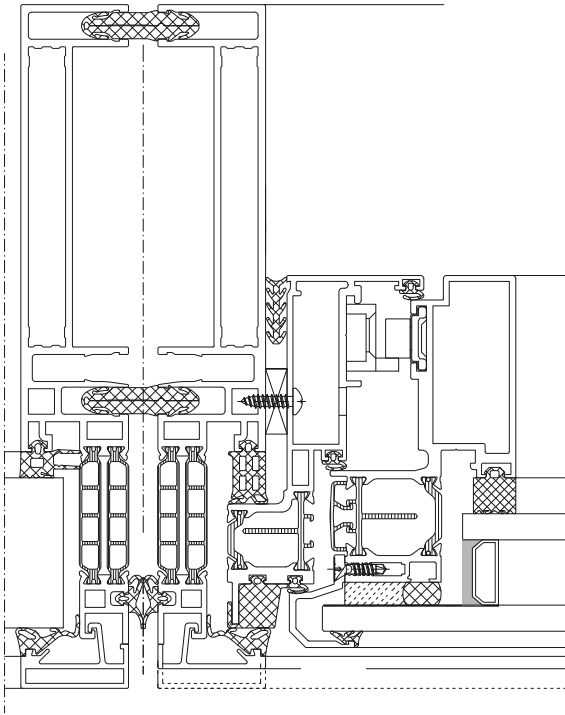
### PROFILE DEPTH

- Frame profile with 137 mm, mullion profile depending on static requirements from 50 mm to 137 mm

ALUMINIUM SYSTEMS @  
**HUECK**

**HUECK GMBH & CO. KG**

Loher Straße 9  
58511 Lüdenscheid  
T +49 2351 151-0  
F +49 2351 151-283  
info@hueck.com  
hueck.com



**View this product in 3D!**

Download our 3D-App on your smart-phone or tablet by scanning this code or searching for „Hueck“ at your App-Store (Android or Apple).

ALUMINIUM SYSTEMS @  
**HUECK**

**HUECK GMBH & CO. KG**

Loher Straße 9  
58511 Lüdenscheid  
T +49 2351 151-0  
F +49 2351 151-283  
info@hueck.com  
hueck.com