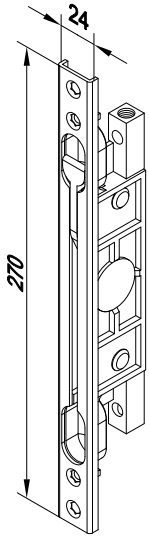


**Beschlagvarianten für den Standflügel - bitte separat bestellen!**  
 Fitting variants for the inactive sash - please order separately!



**Z 921253**

Falzkantriegel, doppelseitig wirkend, Dornmaß 40 mm, U-Stulp 270 x 24 x 6, mit Klappebel, Stangenbolzen mit M5-Innengewinde, Hub 21 mm, **Treibstangen separat bestellen!**

**Z 921253**

Rebate flush bolt, effective on both sides, 40 mm backset, U-shaped forend 270 x 24 x 6, with lever, M5 inner thread on rod ends, stroke 21 mm, **Please order operating rod separately!**



**Z 913575**

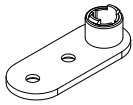
Treibstange unten \* massiv Ø 10 x 1420 mm Anschlußgewinde M5

\* (in Verbindung mit Z 921253 auch oben verwendbar)

**Z 913575**

Operating rod, down \* massively Ø 10 x 1420 mm connecting thread M5

\* (in connection with Z 921253 usable on top as well)

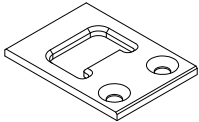


**Z 981168**

(Z 921126 31 & 2 x Z 921105) Stangenführung für Standflügel inkl. Befestigungsschrauben

**Z 981168**

(Z 921126 31 & 2 x Z 921105) guide for operating rod for inactive sash incl. fixing screw



**Z 981167**

(Z 921095 31 & 2 x Z 902204) Schließblech für Standflügelverriegelung in Anschlagsschwelle inkl. Befestigungsschrauben

**Z 981167**

(Z 921095 31 & 2 x Z 902204) Strike plate for secondary leaf locking in stop threshold profile incl. fixing screw

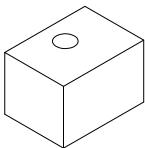


**Z 921105**

Schraube ø 5 x 24 mm

**Z 921105**

Screw ø 5 x 24 mm

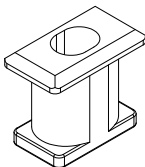


**Z 921416**

Stangenführung unten für Standflügelverriegelung mit Automatikdichtung

**Z 921416**

Guide for operation rod bottom for inactive sash with automatic retractable ground seal

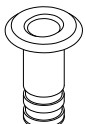


**Z 921417**

Bodenbuchse für ø10 mm Rundstange

**Z 921417**

Ground sleeve for ø10 mm operating rod



**Z 913082**

Bodenbuchse für ø10 mm Rundstange

**Z 913082**

Ground sleeve for ø10 mm operating rod